

Jump in!



**THE REFUGE 2022
SUMMER EXPERIENCE**
Camps • Missions • Retreats



WELCOME

We are completely humbled by what God is doing in this place. He continues to draw us closer as His vision for **The Refuge** is revealed a little more each day.

*Sammy Hudson and wife, Desta—
Executive Director, The Refuge
Son Set Ministries, Inc.*

OUR VISION

To counter cultures of violence, abuse, neglect, and hopelessness by demonstrating the love of Jesus Christ through programs and facilities that nurture a healthy spirit, body, and mind

OUR MISSION

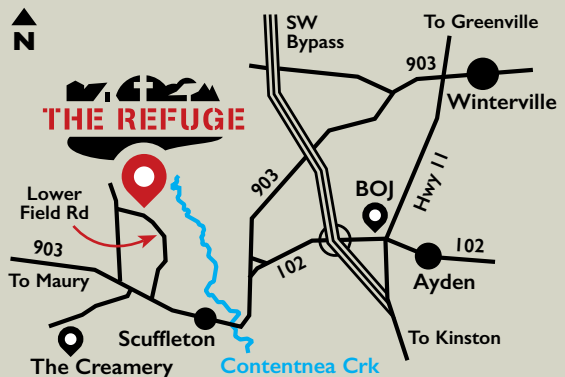
To share and model the hope of Jesus Christ

OUR CORE VALUES

*The Word · Prayer · Passion
Hospitality · Joy*

“This is a hidden gem, full of treasures that will last for eternity. The staff are very friendly and qualified. The Refuge is an amazing place for all ages and teams!”

Kendi Davis



“I am not ashamed of the Gospel.” Romans 1:16

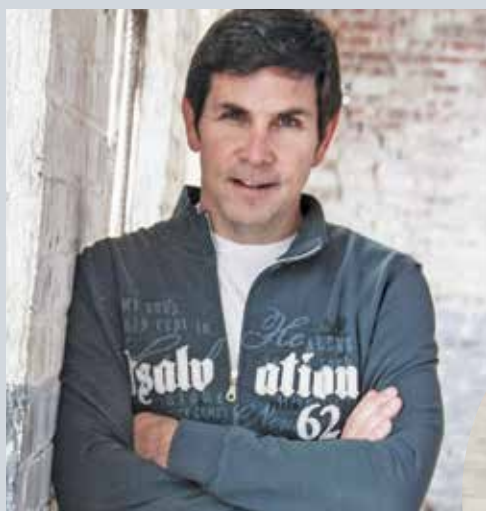
U N A S H A M E D

NEW
FOR
2022!

*Unashamed—Expanding
Our Biblical World View*

🌙 Overnight Camp • \$695

July 17–22, 2022 • Rising 8th to Completed 12th



Alex McFarland, Truth for a New Generation Ministries, worldwide speaker, evangelist, educator, author, and advocate for Biblical truth

**Presented by
Alex McFarland**
with Meeke and Wil
Addison from “Airing
the Addisons”



The Refuge is thrilled to offer an incredible, new opportunity as we partner with Alex McFarland from “Truth for a New Generation” and Meeke and Wil Addison from “Airing the Addisons.” With a passion to equip students to firmly stand on a Biblical foundation, our speakers are experts in cultural issues and how to defend your faith as a believer in Christ. Campers will also enjoy an action-packed week at The Refuge participating in all that the camp has to offer. Lodging is bunk-style in one of our early 1900 farmhouses, fully equipped with A/C.

SUMMER CAMPS

First and foremost, we strive to create a camp environment where every child can grow in their relationship with Jesus Christ. High-energy fun and non-stop action will fill each day as they develop new friendships in a caring and safe camp environment.



Connecting The Dots

☀️ Day Camp • \$250 • June 6–10, 2022

Rising 1st to Completed 5th

Who said kids can't impact the world for Jesus? This amazing week is about teaching kids how to be the hands and feet of Jesus. They will experience mission, music, games, and quiet moments in the journal room. Connecting The Dots will end with a special closing celebration for campers and their families.

Summer Autism Camp

☀️ Day Camp • \$250

July 25–28, 2022

Rising 1st to Adult

One of our favorite weeks of camp! Campers will discover God's creation while canoeing, fishing, swimming, and making crafts. Each day will begin with devotion time and learning about Jesus. We cater to the needs of your camper with a fun, Christ-filled experience. Older campers are welcome for this special camp.



REGISTER ONLINE

ncRefuge.org/registration

“For since the creation of the world, God’s invisible qualities—His eternal power and divine nature—have been clearly seen.” Romans 1:20

Creation Discovery

☀ **Day Camp • \$250**

June 20–24, 2022

July 11–15, 2022

**Rising 1st to
Completed 5th**

Campers will discover God through exploring the forest and streams, catching fish, or learning how pine cones open and close. They will discover how God’s creation has been designed with a purpose, and that they are the most amazing part of it. This camp will end with an optional campout on Thursday night with stargazing and hayrides.



Creation Discovery

☾ **Overnight Camp • \$495**

June 19–24, 2022 • July 10–15, 2022

Rising 3rd to Completed 5th

During the day these campers will experience much of the same activities as those attending the Creation Discovery Day Camp. However, once the day campers leave, they will experience **The Refuge** after dark with evening hayrides, stargazing, singing around a campfire, going on a night hike, and more.

Creation Adventure

☾ **Overnight Camp • \$495 • June 26–July 1, 2022**

Rising 4th to Completed 7th

If your camper has enjoyed one of our Creation Discovery Camps and is looking for something more, this is the week for them! Besides enjoying traditional camp activities, we’ll take it up a notch with a full-day paddle trip and overnight tent camp excursion at our new “Little Creek Outpost.” Campers will be placed into groups with students of similar age where they will experience cooking over a fire, sharing time together in small group devotions, and creating memories that will last a lifetime.

“Whoever says he abides in Him ought to walk in the same way in which He walked.” 1 John 2:6

The Refuge Leadership Camp (TRLC)

🌙 Overnight Camp • \$1,150

June 19–July 1, 2022

Rising 11th to Completed 12th

This two-week program is designed to help students stand on their own faith as they prepare for life after high school. We will spend time together looking in depth at the leadership model given to us by Jesus. Campers will gain valuable training in outdoor survival and canoeing. They will experience camp in a whole new way as they learn what it takes to lead camp activities. Campers will learn life skills from community leaders on time management, financial responsibility, and personal communication. An exciting overnight excursion will highlight this empowering program.

Limited to 12 participants.



REGISTER ONLINE

ncRefuge.org/registration

Summer Camp Leadership

The Refuge summer staff understands the role they play in the lives of our campers. Staff members have completed their first year of college and have a walking relationship with Jesus Christ. Counselors will be trained and certified in first aid/CPR.

Individuals interested in working with The Refuge must meet the following criteria:

- Pass a national background check.
- Must be able to stay overnight at camp.
- Be of sound mind and physical health, capable of leading and participating in strenuous outdoor activities.
- Demonstrate a positive, Christ-like attitude toward persons of all races, ages, genders, ethnic origins, socio-economic backgrounds, and denominations.

Apply online at ncRefuge.org/programs/staff-opportunities

YOUTH MISSION TRIPS

“Only one life, ‘twill soon be past. Only what’s done for Christ will last.”

C.T. Studd, Missionary



The Refuge Summer Missions

🌙 Overnight Camp • \$495

June 12–17, 2022 • July 24–29, 2022

Rising 6th to Completed 12th

Join us for one of our annual summer mission weeks impacting Lenoir, Greene, and Pitt counties. Students team up with peers from other churches and serve these communities together with the heart of Christ. Projects include VBS, gleaning and delivering food, visiting the elderly, painting, light construction projects, and more. Students will be divided into small groups, becoming like a family as they serve others and spend time together in the Bible. Some of the communities we impact are Kinston, Farmville, Snow Hill, Grifton, and Walstonburg. Lodging is bunk-style at **The Refuge** in one of our early 1900 farmhouses, fully equipped with A/C.

**SAME
MISSION—
BRAND NEW
NAME!**

OTHER RETREATS AND EVENTS

SOW Rite: Youth Mission Weekend

☾ **Overnight Retreat • \$125 covers two nights lodging, four meals, and program materials.**

November 11–13, 2022

The Refuge invites youth groups for a weekend to SOW (Serve Others Well). Teaming with area ministries, groups serve a variety of mission projects. They will learn what it means to be the hands and feet of Christ in many different ways. As we sow seeds, we may never see the final crop, but we will know we made a difference. Groups arrive Friday for an inspiring program, serve on Saturday, enjoy another program Saturday night, and worship Sunday morning.



Cultivate: Youth Workers Retreat

☾ **Overnight Retreat • No cost for the first person from each church. \$25 fee for each additional guest.**

January 20–21, 2023

Cultivation is a very old gardening principal where weeds are removed from the garden and soil is loosened to optimize the retention and penetration of air, water, and nutrients. The Refuge is providing a similar opportunity for youth workers to get replenished. Cultivate is a time for removing distractions and expectations, and sharing the fullness of life that Jesus offers. There is time for worship and space for God to penetrate the soul. Teaching will focus on areas in which youth leaders struggle, and breakout groups will give an intimate setting to share thoughts and encouragement. Cultivate starts Friday night and ends Saturday evening, but attendees are invited to come early or stay until Sunday to relax and rejuvenate.

Confirmation Retreat

🌙 Overnight Retreat • \$125 covers two nights lodging, four meals, and program materials.

March 25–27, 2022

Confirmation is a time for students to hear about the God who loves them and how this impacts their life. **The Refuge** has crafted a Confirmation Retreat for churches to bring their students and mentors that engages them in interactive teaching sessions. Together we will work through these six sessions:

God our Creator (Purpose) • Jesus our Redeemer (Sin and Redemption)
Holy Spirit our Sustainer (Power) • Being a Follower (Living as a Christian)
Creed (What We Believe) • Taking A Step (Making a Decision)

The 2nd Annual



*“I have come into the world as a LIGHT,
so that no one who believes
in me should stay
in darkness.”
John 12:46*



2021

Continue a family tradition! Again this Christmas season, you're invited to drive through **The Refuge** to celebrate the birth and life of Jesus Christ, our Savior! Each restored farmhouse will be decorated by church teams and volunteers to reflect the Light of the World, with Bible scenes and illuminating surprises around every corner.

15 Nights—6:00PM to 9:00PM

- * Friday November 26
- * Saturday November 27
- * Thursday December 2
- * Friday December 3
- * Saturday December 4
- * Thursday December 9
- * Friday December 10
- * Saturday December 11
- * Thursday December 16
- * Friday December 17
- * Saturday December 18
- * Monday December 20
- * Tuesday December 21
- * Wednesday December 22
- * Thursday December 23

THE REFUGE THEME

Stories of hard work in the fields, laughter around the kitchen table, songs on the front porch, and prayers together as a family—these are the stories from families who give us the old farmhouses and structures that form the timeless theme of **The Refuge**.

The old houses are much like us in many ways. They come to us worn out, broken, and in need of renovation. Each one has its own unique struggles that need attending. But when they come here, they are restored, cared for, and given new purpose. This is exactly what God offers us through His son, Jesus: the opportunity to be renewed and to discover His purpose for our lives. **The Refuge** exists to *share and model the hope of Jesus Christ*.



**Care to join us on
the front porch?**

THE REFUGE FACILITY

Nestled in rural Greene County, NC and less than 75 miles from Rocky Mount, Greenville, New Bern, Kinston, Goldsboro, Jacksonville, and Raleigh, **The Refuge** is ideally located to serve all of eastern NC. With nearly 140 acres under development, it offers fields, forests, trails, ponds, and streams in a serene country setting reflective of God's glory.



Accommodations

In keeping with our theme of restoration and refuge, our accommodations combine village charm with modern conveniences. Six spacious cabins sleep 84 campers total, ranging from 12 to 22 persons per cabin, all with A/C, generous bathing facilities, and wide porches with rocking chairs! Outdoor camping is also welcome.

The Moses House sleeps 12 in bunk-style beds. Features a living room with fireplace and sitting area, full kitchen, and dining area.

The Luke House sleeps 12 in bunk-style beds. Features a large living room with full kitchen and dining area.

The Hiding Place sleeps 22 with a large bunk room (16 beds), smaller counselor room (6 beds), and a gathering area inside.

Martha's Place sleeps 22 with a large bunk room (16 beds), smaller counselor room (6 beds), and a gathering area inside.

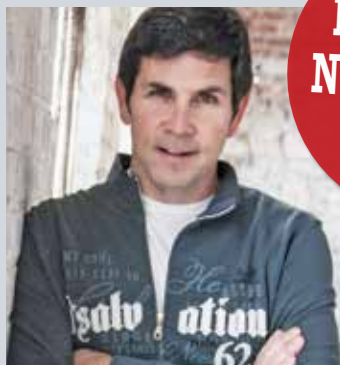
Beulah Land House sleeps 16 in bunk-style beds. Features a large living room with fireplace and a small kitchenette.

The Orchard House features a great room with fireplace perfect for large indoor meetings, full kitchen, and dining area large enough to serve 50 persons.



“I am not ashamed of the Gospel.” Romans 1:16

U N A S H A M E D



**EXCITING
NEW CAMP!
SEE P. 3**



**Presented by
Alex McFarland**
with Meeke and Wil Addison

We are thrilled to offer an incredible, new opportunity at **The Refuge** as we partner with Alex McFarland from “Truth for a New Generation” and Meeke and Wil Addison from “Airing the Addisons” to equip students to firmly stand on a Biblical foundation.

THE REFUGE ALSO OFFERS...

School Programs

NCSCoS curriculum-based activities will help you bring the classroom to life. Ask about our **Simply Natural Creamery** half-day combination program!

Marketplace Ministry

The Refuge serves businesses and their employees by offering events and programs to build morale and trust in the workplace. These include team building and leadership development, a fun employee or customer appreciation day, or a company getaway.

Facility Usage

The Refuge is a beautiful place for any event. Our camp has farmhouses, fields, and a covered pavilion that can be rented for anything, from a concert to a wedding.

The Refuge • A Son Set Ministry
1380 Lower Field Road • Ayden, NC 28513
1-252-746-4766 • www.ncRefuge.org

